

The K&N filters physical parameters are as follows:

28.3 l per ft³

Dimensions are 8.5" x 5.25"

Pleat height: 0.75"

Number of pleats: 29

Effective Area: 1.6 ft²

Current Filter System

Dimensions are 8.75" x 6.25"

Pleat height: 1.5"

Number of pleats: 65

Effective Area: 8.4 ft²

1. Test setup shown in figure 1, attached
2. Gravimetric efficiencies were calculated using percent gain on on analysis membrane (293mm disc)
3. Air dP results presented in graph 1, attached.

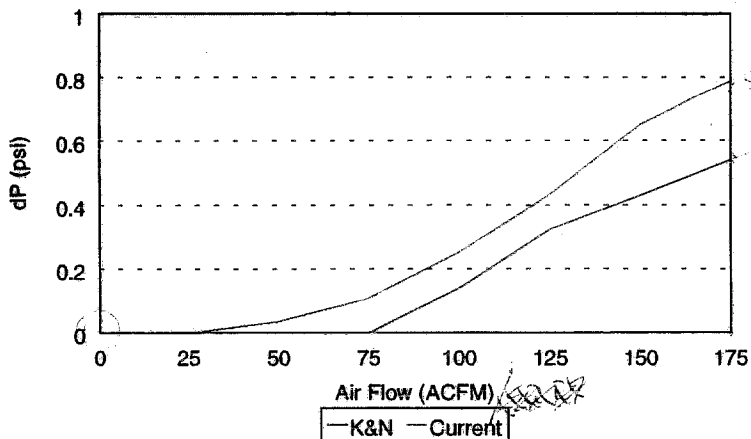
K&N Gravimetric efficiency using ACCTD (40 fpm)

Loading Range (gm/sq.ft)	% Efficiency
0 - 2.41 ²⁴ _{10%}	85.2
2.41 - 5.17 ^{8%} _✗	86.6
5.17 - 10.34	89.1
10.34 - 20.69 ^{35%}	92.5
20.69 - 41.38	98.1

Current System Gravimetric efficiency using ACCTD (40 fpm)

Loading Range (gm/sq.ft)	% Efficiency
0 - 2.55 ^{75%} _✗	93.4 _{10%}
2.55 - 5.7 ^{45%}	95.8
5.7 - 10.1	97.9
10.1 - 21.2	98.5
21.2 - 38.8	99.2

Air vs. dP

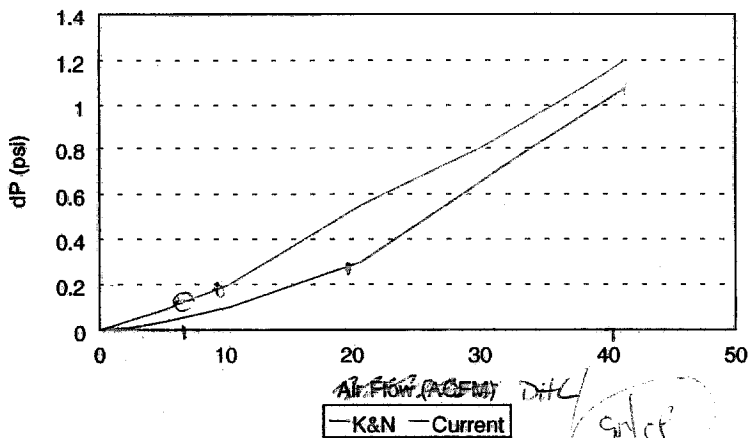


0.25
400

0.7

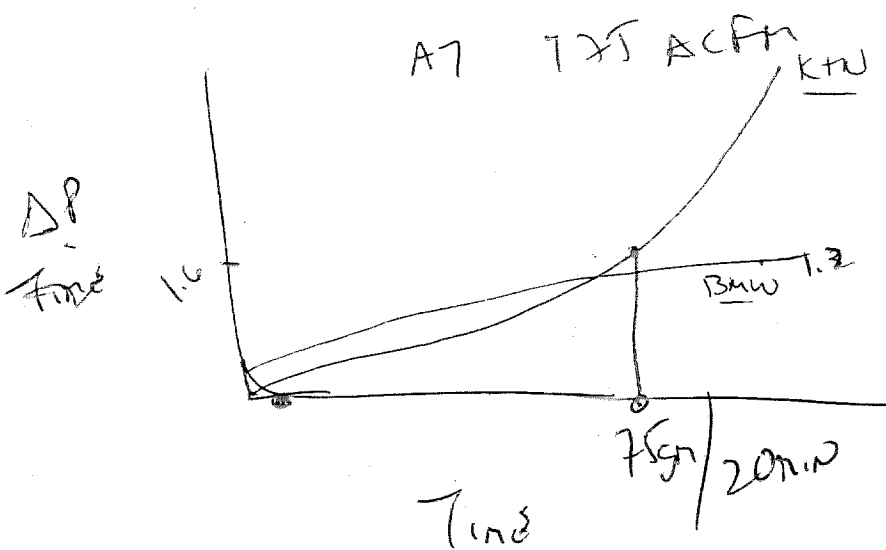
200 210

dP vs Dirt Capacity at 60 fpm air flow



9/1/07

STANDARD AIR FLOW
VES TIME ≠
CONSTANT DUST



↑ 0.4 psi

U/M

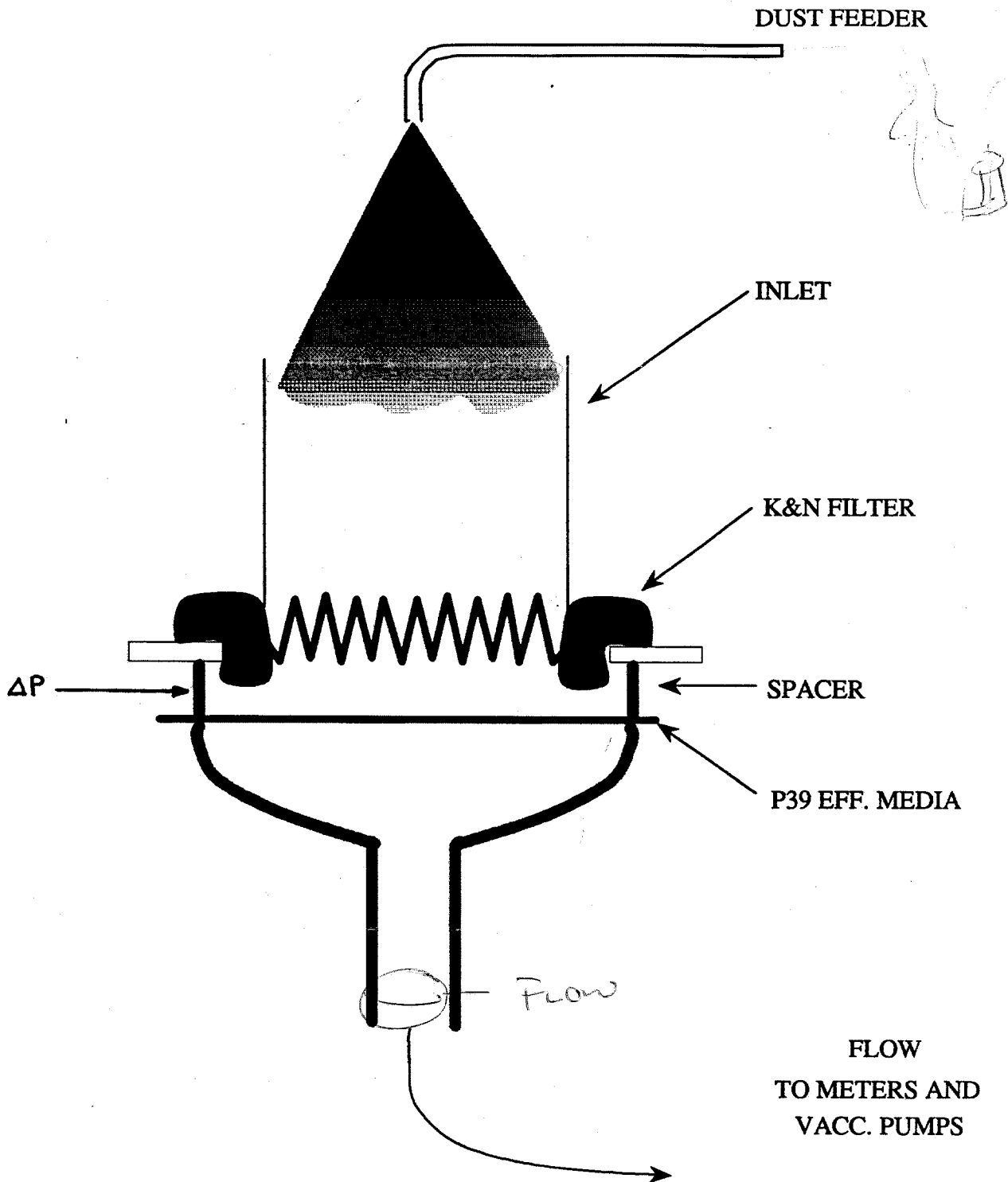


FIGURE 1- TEST SET-UP CROSS SECTION.